

Ocula

Micro-surgical Visualisation System

**“
ENHANCED
VISUAL
EXPERIENCE
”**

“ OPTIMAL AT ITS BEST ”

- Apo-chromatically corrected optics ensures perfect perceptive quality image
- Sanma's BBAR coated optics offers enhanced efficacy of light transmission Vivid stereoscopic three dimensional view
- Desirable depth perception
- Endorse successful results
- Ensures comfort usage & ownership



Sanma Ocula

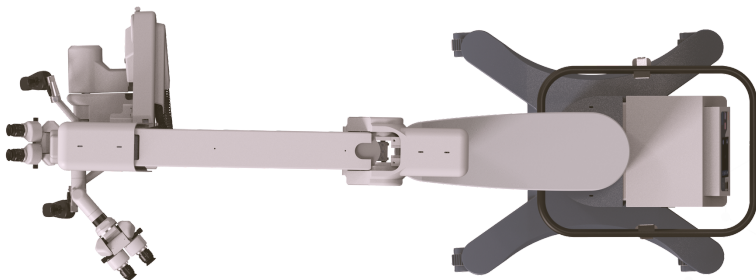
a part of comfortable and
successful surgical results

Optics & Illumination

- Binocular tube: 0°-210°tiltable
- Binocular eye piece: 10x
- Integrated inclined angulated eye piece extender for better seating and position ease neck strain
- Diopter adjustment: +6 to -6 or -8 to +5
- Magnification Control: 1:6 Ratio continuous zoom
- Working distance: 200mm to 500mm variable
- Illumination: LED / Xenon light source through fused FOC

Controls & Movements

- 6 axis electro magnetic brakes or smooth articulated spring functional
- Joy stick powered head movements for fine swivel and axial positioning
- Multifunctional handgrip control for zoom, focus, illumination (Optional: Foot switch)
- XY movements



30° inclined angulated binocular tube extender for better seating and position thereby ease neck strain and ensures convenience extended surgical time

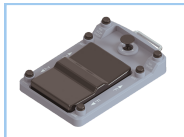


Optional Filter

- Yellow 560
- or
- IR 800

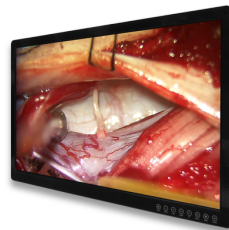


Handgrip Controls



- 1:6 ratio zoom
- Focus
- Illumination
- Joy stick for fine optical head movements
- 6 axis electro magnetic brakes

Optional
Foot Switch Control



Imaging System

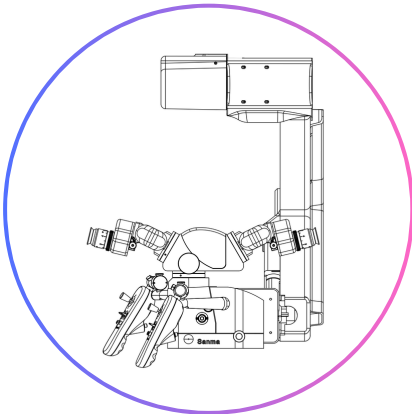
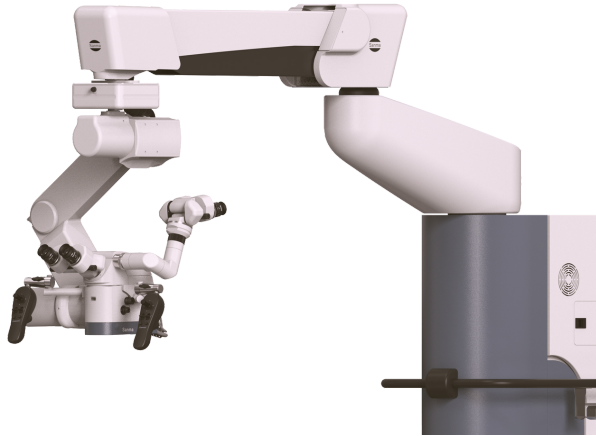
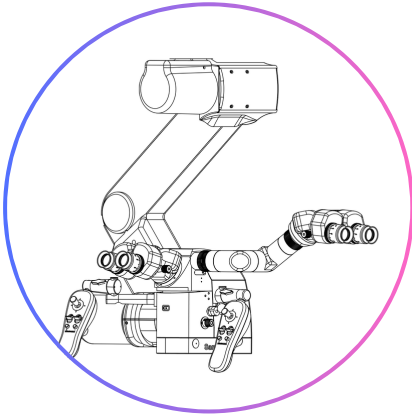


- Full HD / 4K
- Recording: live video & still image
- Storage memory capacity: 1TB or 4TB
- Connectors: 3G SD-HDI, DVI-D
- Monitor: optional

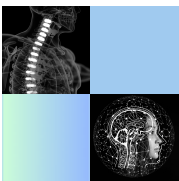
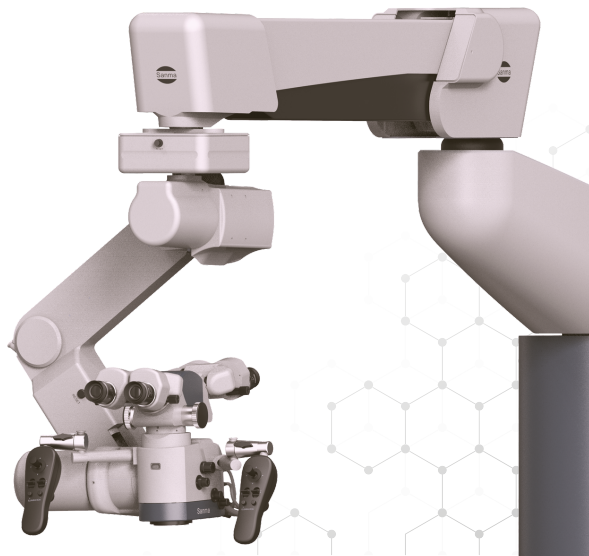


Optional Assistant View

- Co-observer tube with angulation positioning options



- Face to face optical bridge with later view



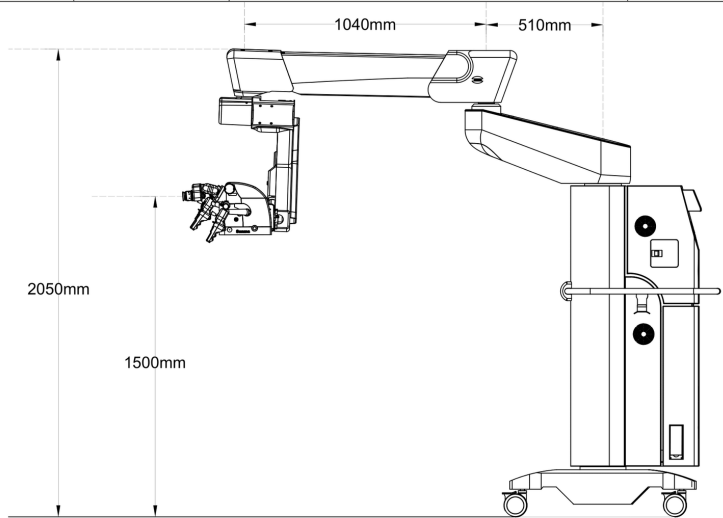


Vibrant
Vivid
Detailed

Technical Data:

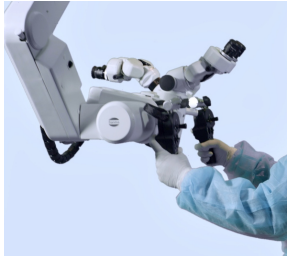
Sanma Ocula

Features		Description	Options
Optics		Full apochromatic Galilean type, AR coated	
Binocular tube		0° - 210° tilt able binocular tube) Inter pupillary distance: 50mm to 75mm 10 X wide field & high eye point (option: 12.5x) Diopter adjustment +6 to -6	Diopter : magnetic locks and setting from -8d to +5d
Assistant View		Side observer tube	face to face lateral view observer tube
Magnification		1:6 ratio continuous zoom controlled by motorized handgrip	
Field of View		Zoom Magnification: 181-15.26mm	
Controls		Handgrip controls for magnification, focus, illumination, 6 axis magnetic,	Foot switch control
Optical head Function		Joy Stick control for fine optical head movements -20° to +90° axially and -40° to +40° side wise	Foot switch control
Objective lens		i-focus 200mm - 500mm variable objective lens controlled motorized handgrip	Foot switch control
Illumination		Hi-power LED Homogenous co-axial shadow free bright white spot, light guide: through fused fiber optic cable, day light color temperature, inbuilt UV filter , stand by light source	
Imaging System		<ul style="list-style-type: none">• Full HD CMOS 1080p• HD-SDI / HDMI, video recording & still image• Internal Storage HDD 1 - TB / 4 TB• HD Monitor (size subject to available)	4K System
Filters			<ul style="list-style-type: none">• IR 800• Yellow 560





Technology for Surgical



EMC 2014/108/EC
EAR Regulation (EU) 2017/745 on Medical Devices
Clinical Evaluation report as per EU MDR 2017/745
Technical documentation as per Annex II of EU regulation 2017/745
ISO 13485:2016 Certified facility

Specifications & Design are subject to change without prior notice as a result of
further product development
©Sanma Medineers Vision Private Limited
All Rights Reserved
2024



Sanma Medineers Vision Private Limited
Chennai – 600080, TN, India.
sales@sanmas.com
www.sanmas.com

