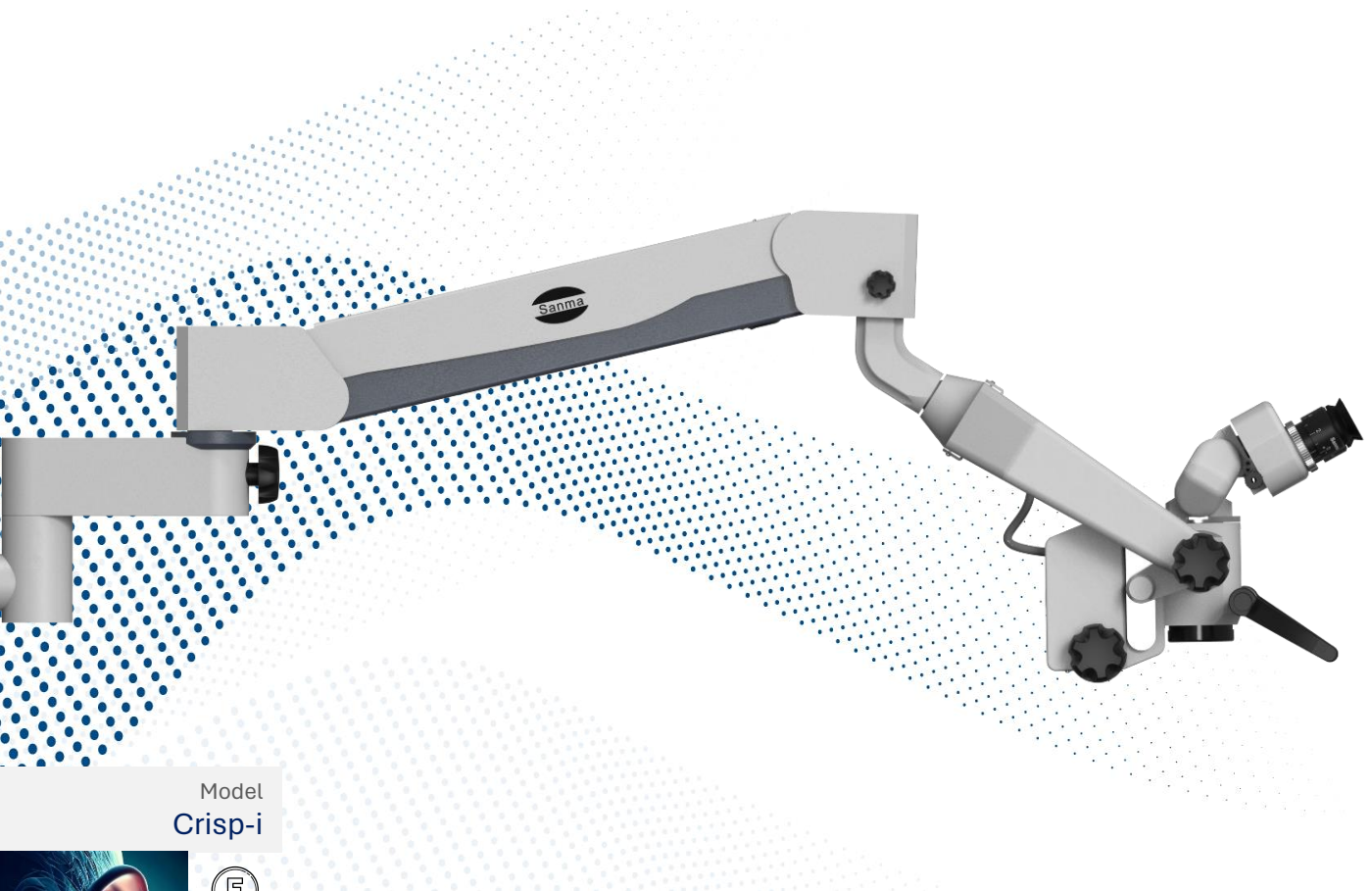


# Sanma



Model  
Crisp-i



## Enhanced Visual Experience

- Clarity
- Depth
- Illumination
- Ergonomics

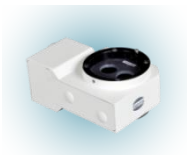
The Sanma logo is a blue circle with the word "Sanma" in white text.

Sanma's  
Simple Captivate  
Operating Microscope

Sanma's Optics & Easy Maneuverability features crystal clear microscopic view for diagnosing and surgical procedures



Optional Camera Attachment\*



Optional variants for skill lab set up





Optics	Full Apochromatic Galilean Type
Eye Piece	10 X Wide Field & High Eye Point (Diopter Adjustment +6 to -6)
Binocular Tube	Straight 90° binocular Optional: 0° 210° tilt able binocular tube
Inter Pupillary Distance	50mm to 75mm
Magnification	5 Step: 0.4X, 0.6X, 1.0X, 1.6X, 2.5X
Objective Lens	f=250mm ( Optional 200mm / 300mm / 400mm ) Or 200mm – 350mm continuous variable distance manual adjustment
Optical Head Swivel	0° to 90° axially and 180° side wise
Fine Focus	Adjustable 15mm Manually by Knob
Illumination	Homogenous Co-axial shadow free Bright White Spot
Light Guide	LED integrated, Day Light Color Temperature, Inbuilt UV filter

- Medical Device Directive 93/42/EEC
- EMC Directive 89/336/EEC
- E.A.R regulation (EU) 2017/745 on medical devices – AIC 0031-2023
- Clinical Evaluation MEDDEV 2.7.1, Rev.04
- Technical dossier as per MEDDEV 2.5.1
- EN ISO 13485:2016 CB: BSI, Certificate no.: MD 667228
- ICED 13485

Driving Technology Into Surgical services



Sanma Medineers Vision Private Limited  
Chennai – 600080, India  
info@sanmas.com  
sales@sanmas.com  
www.sanmas.com