

LightSheer[®] DESIRE[™] *Light*

The starting point
to your success.



Grow your Business with DESIRE



805 Diode Laser

2 Handpieces

Advanced ChillTip™ Technology

More and more people desire to have permanent hair reduction. They want a treatment that is **effective, fast and comfortable.**

To meet these needs, Lumenis, a leader in laser and energy based technologies, developed the LightSheer DESIRE so you can:

Benefit from a rapid return on investment

Increase your patient satisfaction

Grow your business

In order to provide you with optimal treatment possibilities, the portable LightSheer DESIRE comes with:

- Versatile 805nm diode laser
- 2 handpieces with various spot sizes
- Advanced technology

The unique features of the LightSheer DESIRE enable you to provide your patients with:

- Maximal treatment comfort
- Long lasting results
- Suitable for a variety of skin types

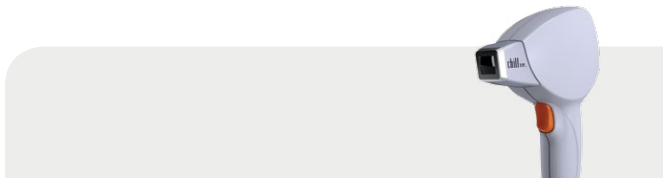
Technology Behind the DESIRE



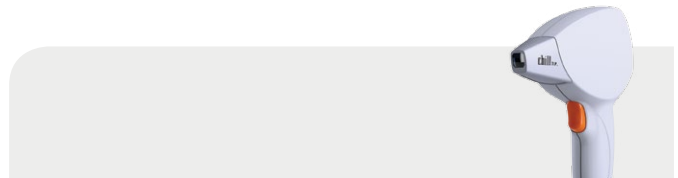
Cutting Edge Technology

Great clinical results begin with the LightSheer DESIRE 805 nm diode laser and the ChillTip™ technology.

Choose between two handpieces offering different spot sizes to effectively treat any body area.



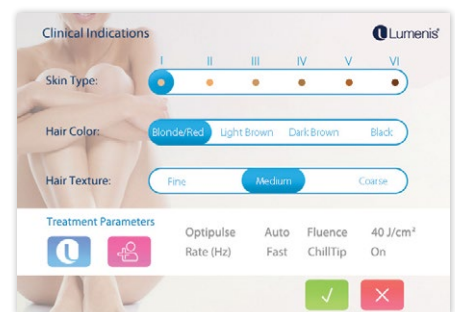
The XC has a Sapphire ChillTip spot size of 12x12mm, providing optimal solution for large and small areas.



The ET has a Sapphire ChillTip spot size of 9x9mm designed to treat small areas that require maximum precision and high fluence.

Advanced Graphical User Interface

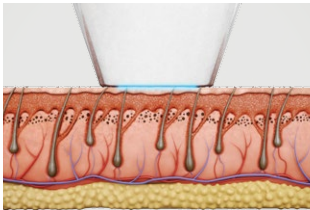
Intuitive presets for fast learning curve and easy treatment delegation.



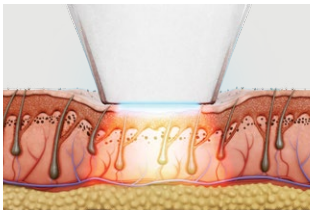
How it Works



How ChillTip™ Works



1. Skin is cooled before and during treatment.



2. Skin is compressed. A laser beam is applied to the skin and the target is damaged

Advantages of ChillTip™ Technology

Safety

Epidermal protection is achieved through ChillTip contact cooling.

Comfort

By continuously cooling the skin, pain and discomfort are significantly reduced.

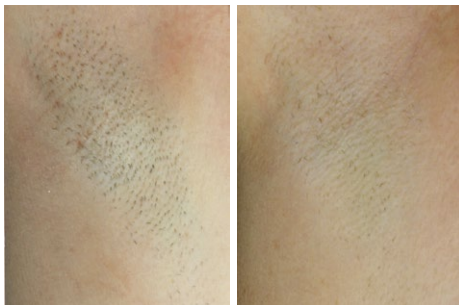
Efficacy

Compression of the skin rotates follicle closer to the surface, blanches blood vessels and reduces competing chromophores. High fluence enables treatment of areas requiring precision and thin, light hair.

Desirable Clinical Results



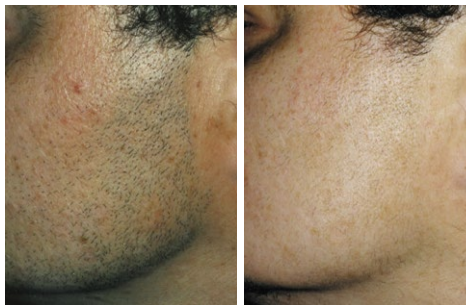
The LightSheer technology by Lumenis has been validated in numerous clinical studies and peer reviewed articles and our customers the world over have been continuously reported high level of patient satisfaction and repeatable results.



Before

After

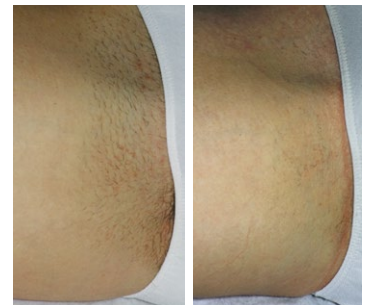
Eight months follow-up post 3 treatments
Courtesy of Robert M. Adrian, M.D.



Before

After

Five months follow-up post 3 treatments



Before

After

Four months follow-up post 3 treatments

"I chose the LightSheer for my practice because it uses an 805 diode and I am very pleased with my choice. The results are outstanding and the treatment is most comfortable for the patients."

Adele Quintana, M.D.

"The LightSheer is a fast and easy to use device. It is perfect for treating all body areas. The cooling of the ChillTip of ET & XC handpieces enables an effective and comfortable treatment for all of my patients."

Omar A. Ibrahim, M.D., Ph.D.

Warnings and Risks:

Treatment should not be attempted on patients with the following conditions in the treatment area: any active infections or inflammatory skin conditions, Dysplastic nevi, tattoos, active cold sores, open lacerations or abrasions, viral, fungal, or bacterial diseases or a history of post inflammatory hyperpigmentation. The most common immediate responses of laser treatment for hair removal, vascular lesions, pigmented lesions are erythema, edema, perifollicular edema and perivascular edema, vascular bleaching, hyperpigmentation and hypopigmentation or textural changes of the treated areas. The complete list of contraindications and risks can be found in the LightSheer DESIRE Light user manual.

Specifications

Platform	LightSheer® DESIRE™ Light	
Handpiece	XC	ET

Technical Specifications:

Laser Type	AlGaAs Diode Arrays	AlGaAs Diode Arrays
Wavelength	805 nm (nominal)	805 nm (nominal)
Spot Size	12 mm X 12 mm	9 mm X 9 mm
Repetition Rate	Up to 3 Hz	Up to 3 Hz
Pulse repetition	1 Pulse	1 Pulse
Fluence	10-40 J/cm²	10-100 J/cm²
Pulse Width	5-400 ms	5-400 ms
Peak Power	1920 W	1620 W
Comfort Management	ChillTip contact cooling (5°C)	
Preset Parameters	Yes	
On-Site Service	Yes; replaceable handpiece	

Platform Specifications

Electrical	100-240 VAC +/- 10%, 12 A max. 50/60 Hz. Single-phase grounded outlet
Dimensions (WxDxH)	51 x 60 x 42 cm; (20.1 x 23.6 x 16.55 in)

Indications for Use

The LightSheer DESIRE Light is indicated for all skin types (Fitzpatrick skin types 1 - VI), including tanned skin.

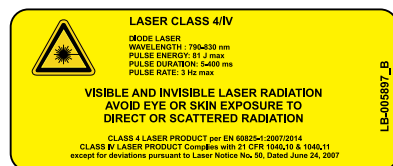
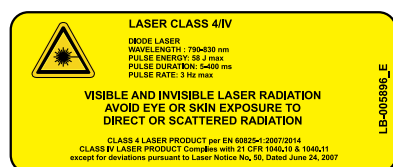
It is indicated for the treatment of :vascular lesions (including angiomas, hemangiomas, telangiectasia and other benign vascular lesions), Pseudofolliculitis

Barbae (PFB), Hair removal, permanent hair reduction*, benign pigmented lesions and leg veins.

* Note: Permanent hair reduction is defined as the long-term, stable reduction in the number of hairs regrowing when measured at 6, 9, and 12 months after the completion of a treatment regime.

About Lumenis

Lumenis is a global leader in the field of minimally-invasive clinical solutions for the Surgical, Ophthalmology and Aesthetic markets, and is a world-renowned expert in developing and commercializing innovative energy-based technologies, including Laser, Intense Pulsed Light (IPL) and Radio-Frequency (RF). For nearly 50 years, Lumenis' ground-breaking products have redefined medical treatments and have set numerous technological and clinical gold-standards. Lumenis has successfully created solutions for previously untreatable conditions, as well as designed advanced technologies that have revolutionized existing treatment methods in each and every one of the verticals we operate in. Our drive for innovation stems from an uncompromising commitment to improving the health and well-being of our patients; addressing new and growing needs of aging populations; and in offering medical professionals cutting-edge solutions that fit seamlessly into the health-economics environment of the 21st century. The world over, we bring Energy to Healthcare.



Lumenis LTD

Yokneam Industrial Park
Hakidma Street 6,
P.O.B. # 240
Yokneam 2069204,
ISRAEL
Tel: +972 4 959 9000



Lumenis (Germany) GmbH

Heinrich-Hertz-Str 3
D-63303 Dreieich-Dreieichenhain
GERMANY
T +49 (0) 6103 8335 0



AMERICAS

San Jose, CA, USA
T +1 408 764 3000
+1 877 586 3647
F +1 408 764 3999

EMEA

Roma (RM), Italy
T +39 06 90 75 230
F +39 06 90 75 269
Hertfordshire, UK
T +44 20 8736 4110
F +44 20 8736 4119

JAPAN

Tokyo, Japan
T +81 3 6743 8300
F +81 3 6743 8301

ASIA / PACIFIC

Beijing, China
T +86 10 5737 6677
Gurgaon, India
T +91 124 422 07 95
Kowloon, Hong Kong
T +852 217 428 00
F +852 272 251 51

For more information: www.lumenis.com

©LUMENIS LTD 2017



PB-2002616 REV C

LUMENIS.COM/AESTHETIC